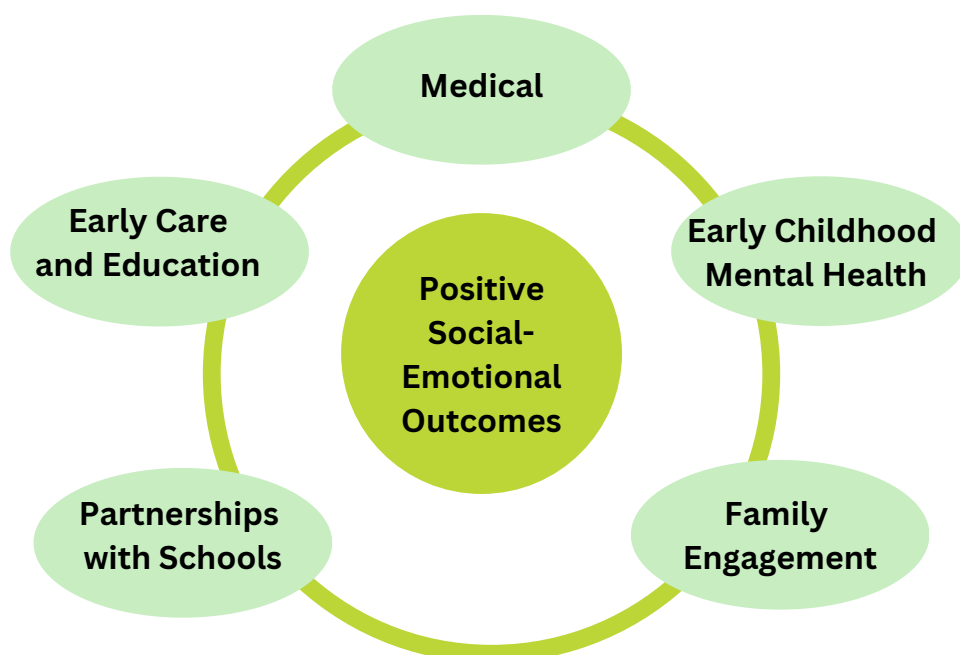

2023-2024

Platte County Rooted in Relationships Snapshot Report

Rooted in Relationships (RiR) is a statewide initiative that partners with communities to implement evidence-based practices that enhance the social-emotional development of children, birth through age 8. RiR supports communities to implement the Pyramid Model and establish a multi-disciplinary stakeholder team charged with developing and implementing a long-range plan to influence the early childhood systems of care to support the healthy social-emotional development of children. Platte county began implementing the RiR initiative in 2021. Their work is coordinated by Community and Family Partnership (CFP) and the fiscal agent is Columbus Area United Way. The CFP collaborative is made up of individuals from different sectors of the community including but not limited to parents, schools, public health, head start/early head start, mental health providers, health and human services, law enforcement, early childhood educators/coaches, health care providers, faith-based sector, and interested citizens.



COMMUNITY EARLY CHILDHOOD SYSTEMS OF CARE

From July 2023-June 2024, thousands of families were served directly and indirectly in Platte County. Activities most frequently took place in the priority areas of Early Care and Education, Family Engagement and Early Childhood Mental Health.

Children and Families Served 2023-2024

Number of Families Served Directly	419	Number of Families Served Indirectly	168	Number of people reached through communication*	352,853
Number of Children Served Directly	488	Number of Children Served Indirectly	333		



Early Care and Education

The following Early Care and Education activities occurred:

- Community newsletters reached 354 individuals
- Radio ads on the importance of early childhood during the Week of the Young Child reached over 350,000 individuals



Family Engagement

The following Family Engagement events/activities took place:

- Circle of Security classes with 6 attendees



Early Childhood Mental Health

The following Early Childhood Mental Health activities took place:

- “How are you Really” campaign materials shared with 192 child care providers

*Reached through Communication typically reflects those reached through a communication strategy (e.g., a billboard, social media post, radio ad, etc.)

PYRAMID MODEL IMPLEMENTATION

About the Implementation

The RIR Pyramid Model implementation offers center-based and home-based child care providers with Pyramid Model training and ongoing coaching support for the implementation of positive strategies to promote young children's social-emotional development and skills. Providers participate in training, coaching, and collaboration meetings for three years. The following reports information from July 2023 to June 2024.

Sites and Providers

6 coaches provided Pyramid Model training and implementation support to 27 providers including: 8 home-based providers, 17 lead teachers and 2 assistant teachers.

- 74% of providers were retained in RiR.

About the Children

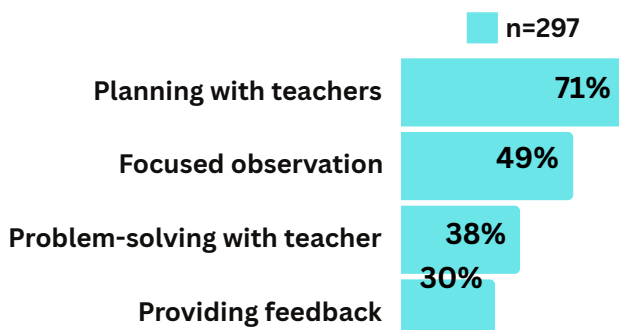
Programs completed a demographic survey about 286 children they serve.

- The majority of children were Caucasian and of the following ages: preschool age (65.7%), toddler age (25.8%), infant age (6.9%) and school age (1.6%).
- 172 children had ASQ-SE results.
 - 97% had typical social-emotional behaviors.

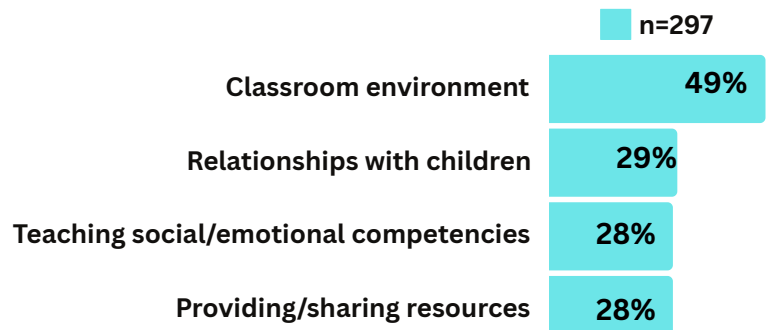
Coaching Activities

The coaches logged 297 coaching sessions with their providers from 7/1/23-6/30/24. 96% of these sessions were in-person and the average session lasted 90 minutes. The following charts describe the most common characteristics of coaching sessions and the most common content of coaching sessions.

The most common coaching activity was **planning with teachers**.

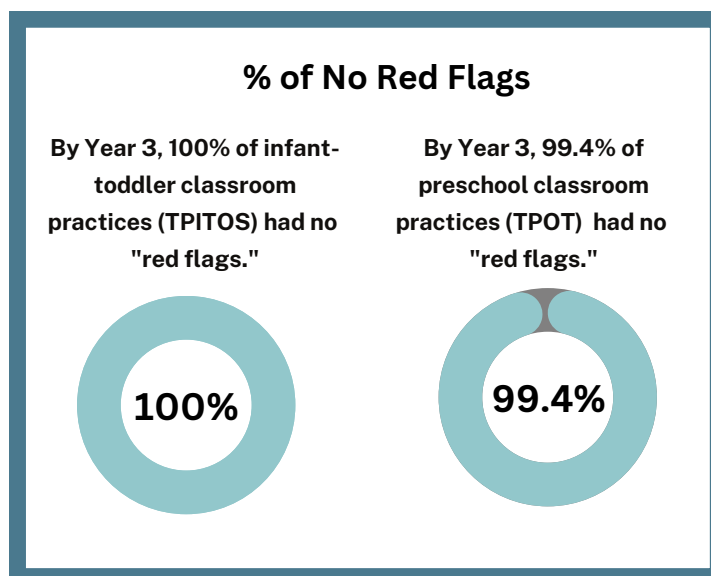
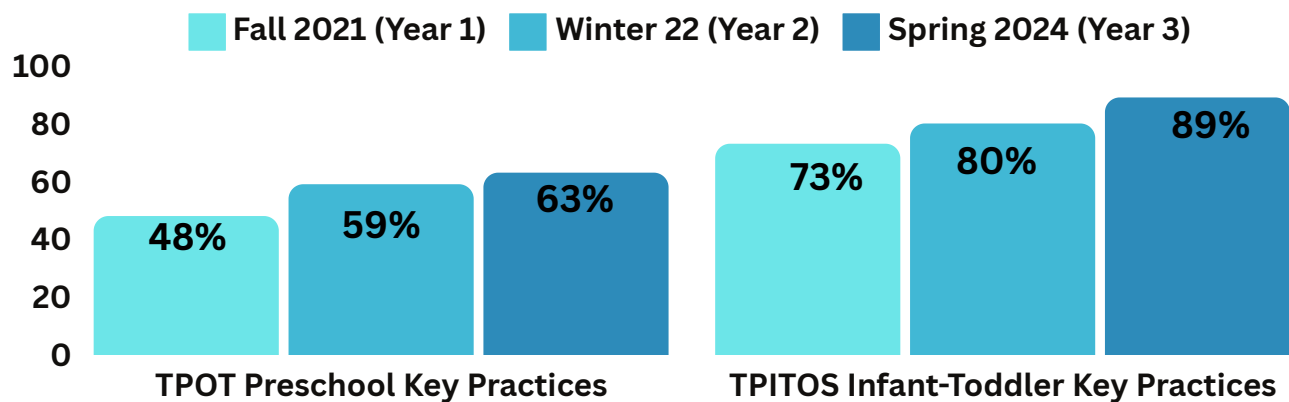


Coaches most frequently helped providers by discussing the **classroom environment**.



2021-2024 Pyramid Model Practices in Place

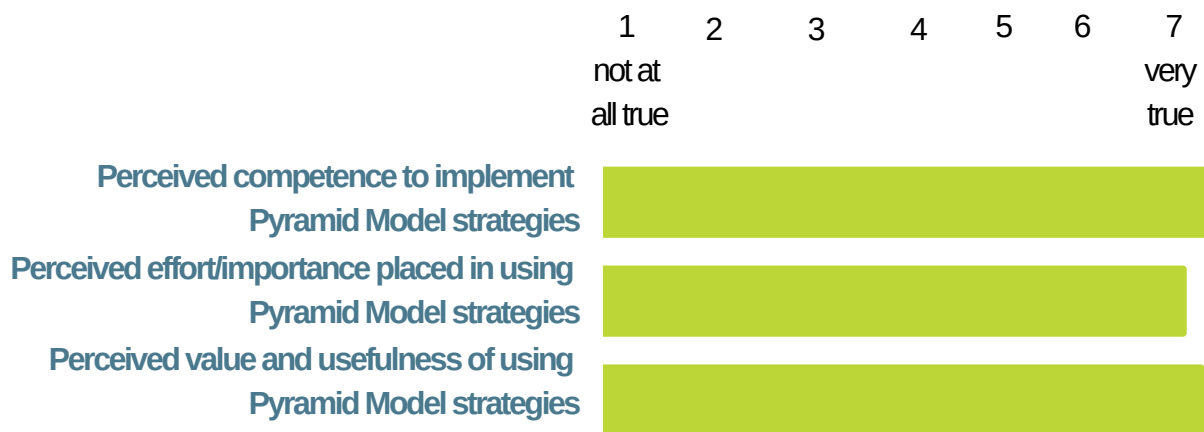
In Platte County, a cohort of providers began in the Fall of 2021.** Lead providers in center-based programs received Teaching Pyramid Observation Tool (TPOT) or Teaching Pyramid Infant-Toddler Observation Scale (TPITOS) observations in the Fall of 2021 (Year 1), the Winter of 2022 (Year 2) and the Spring of 2024 (Year 3). By Year 3, preschool providers (TPOT) had 63% of key practices in place. By Year 3, infant-toddler providers (TPITOS) had 89% of key practices in place. By Year 3, 99% of preschool providers' practices received no red flags and 100% of infant-toddler practices received no red flags. The goal is to have 80% of key practices in place and 0 red-flagged practices by the end of the 3-year period.



**Observation participation numbers are masked as participant numbers at the community level were low. To protect participant privacy n's are not included. To review overall initiative engagement from year to year please see the annual evaluation report. Only individuals with 2 observation time points are included.

Provider Perceptions Year 3

In the Spring of 2024, Year 3 providers (n=9) were asked to completed an exit survey which included open-ended quality improvement questions as well as an intrinsic motivation inventory. Mean scale scores were calculated for the following inventory domains related to the Pyramid Model: perceived competence, effort/importance, and value/usefulness. Mean scores are reported for each domain below. Findings demonstrate intrinsically motivating factors are present across each domain, suggesting sustained Pyramid Model practices are likely.



When asked if providers planned to continue to implement Pyramid Model strategies, **100% said yes**. When asked to describe strategies for continued implementation, responses largely focused on implementing pre-existing strategies daily.

"I will continue to use positive descriptive praise, teach and model friendship and other social emotional skills and help children learn to self-regulate when they have big emotions."
-Provider reflects on continued use of Pyramid Model strategies

89%

of providers found
Pyramid Model
coaching to be
valuable

100%

of providers found
Pyramid Module
trainings to be
valuable

67%

of providers found
Provider Collaboration
meetings valuable

100%

of providers would
recommend the
Pyramid Model to a
colleague

Snapshot Report prepared by
Kailey Snyder, Ph.D.
Kate Dietrich, BA.
The University of Nebraska Medical Center's
Munroe-Meyer Institute:
A University of Excellence for Developmental Disabilities

